



LHAU150
LHAU1502.5

OPERATOR’S MANUAL FOR
12,000RPM 5 in. and 6 in.
RANDOM ORBITAL SANDERS

Operators Instructions

Includes – Please Read and Comply, Parts Page, Parts List, Proper Use of Tool, Work Stations, Putting the Tool into Service, Operating Instructions.

Important

Read these instructions carefully before installing, operating, servicing or repairing this tool. Keep these instructions in a safe accessible location.

Required Personal Safety Equipment



Safety Glasses




Breathing Masks



Safety Gloves



Ear Protection



OIL DAILY

Oil daily for superior performance.

Recommended Airline
Size - Minimum
10 mm 3/8 in

Recommended Maximum
Hose Length
8 meters 25 feet

Please Read and Comply

- 1) General Industry Safety & Health Regulations, Part 1910, OSHA 2206, available from: Superintendent of Documents; Government Printing Office; Washington DC 20402

2) Safety Code for Portable Air Tools, ANSI B186.1 available from: American National Standards Institute, Inc.; 1430 Broadway; New York, NY 10018

3) State and Local Regulations.
- Key parts of the above regulations are excerpted below. They are not intended to be inclusive. Study and comply with all regulations.**

1) TOOL INTENT – Tool shall be used only for purposes intended in its design.

2) AIR SUPPLY – Test and operate tools at 90 PSIG (6.2 Bar) maximum unless tool is marked otherwise. Use recommended airline filters - regulators – lubricators (FRL).

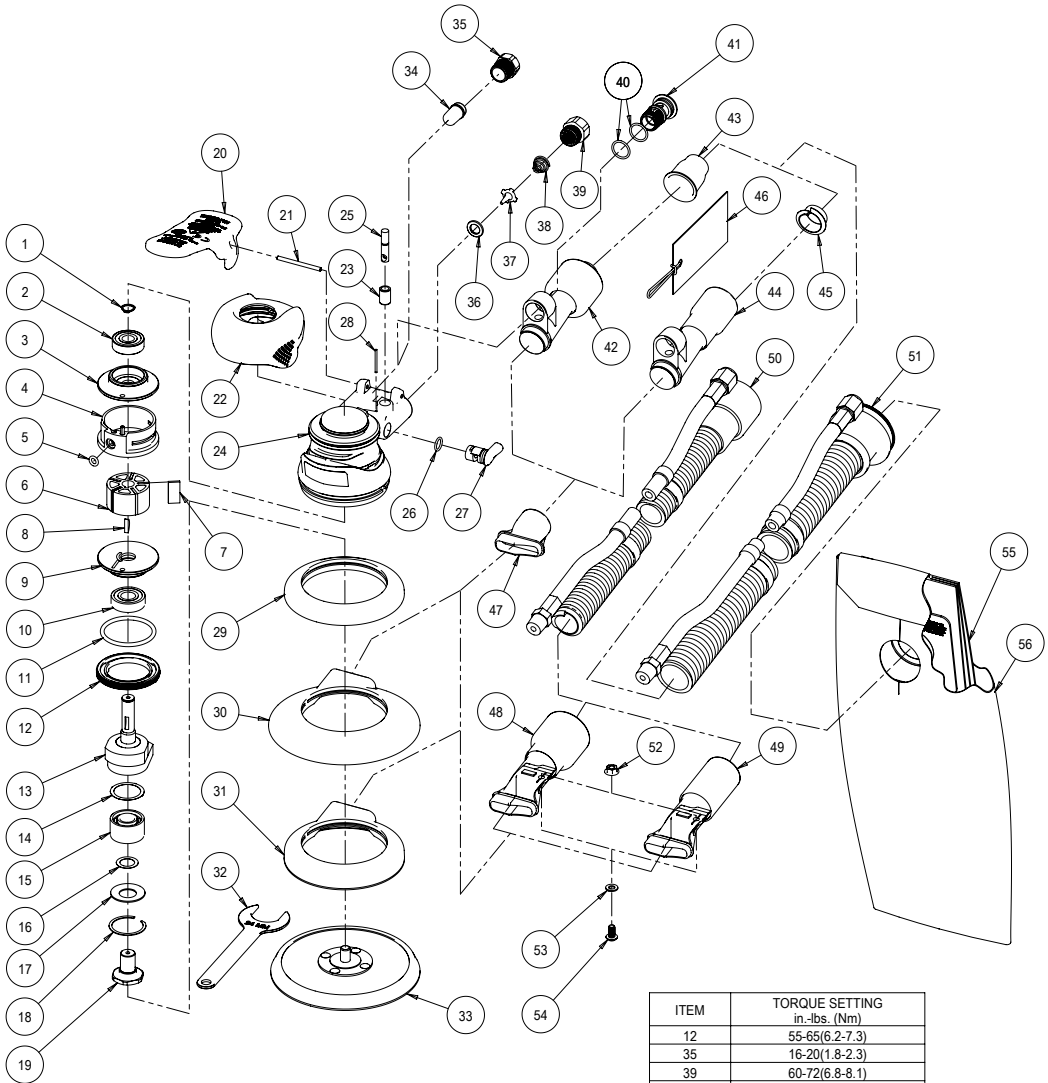
3) UNUSUAL SOUND or VIBRATION – If tool vibrates or produces an unusual sound, repair immediately for correction.

4) OPERATOR PROTECTIVE EQUIPMENT – Wear goggles or face shield whenever tool is in operation. Other protective clothing shall be worn, if necessary. SEE REGULATIONS.

5) SAFETY MAINTENANCE PROGRAM – Employ a safety program to provide inspection and maintenance of all phases of tool operation and air supply equipment in accordance with “Safety Code for Portable Air Tools.”
- LHAU150
LHAU1502.5
- Rev 04/2020

Parts Page

LHAU150
LHAU1502.5



ITEM	TORQUE SETTING in.-lbs. (Nm)
12	55-65(6.2-7.3)
35	16-20(1.8-2.3)
39	60-72(6.8-8.1)
41	36-48(4.1-5.2)
54	30-35(3.4-3.9)

Parts List

IT	P/N	DESCRIPTION	QTY
1	ABA0040	EXTERNAL RETAINING RING	1
2	ABA0021	BEARING	1
3	ABB0045	REAR END PLATE	1
4	ABA0005A	CYLINDER ASSEMBLY	1
5	ABA0042	O-RING	1
6	ABB0005	MACHINED ROTOR	1
7	ABA0010	VANE	5
8	ABA0041	KEY	1
9	ABB0043	FRONT END PLATE	1
10	ABA0019	BEARING	1
11	ABA0045	O-RING	1
12	ABA0001	LOCK RING	1
13	ABB0020	6 x 3/16 in. ORBIT SHAFT BALANCER	1
	ABB0028	6 x 3/32 in. ORBIT SHAFT BALANCER	1
	ABB0019	5 x 3/16 in. ORBIT SHAFT BALANCER	1
	ABB0027	5 x 3/32 in. ORBIT SHAFT BALANCER	1
14	ABA0937	SHIM	1
15	ABA0938	DOUBLE ROW ANGULAR CONTACT BEARING	1
16	ABA0016	SPACER	1
17	ABA0017	BELLEVILLE WASHER	1
18	ABA0018	RETAINING RING	1
19	ABB0018	SPINDLE	1
20	ABA3125	LEVER FOR 3/16 in. (5.0 mm) ORBIT	1
	ABA3129	LEVER FOR 3/32 in. (2.5 mm) ORBIT	1
21	ABA0031	LEVER SPRING PIN	1
22	ABB0611	GRIP	1
23	ABA0015	VALVE SLEEVE	1
24	ABA3130	HOUSING	1
25	ABA0008	VALVE STEM ASSEMBLY	1
26	ABA0043	O-RING	1
27	ABB0440	SIDE SPEED CONTROL	1
28	ABA1914	DOWEL PIN	1
29	ABB0012	5/6 in. NON-VACUUM SHROUD	1
30	ABC0073	6 in. SCREEN ABRASIVE ROS SuperVAC SHROUD	OPT
31	ABC0012	5/6 in. SuperVAC SHROUD	1
32	ABA0022	24 mm PAD WRENCH	1
33	NA	1 Back-Up Pad supplied with each tool (type determined by model)	1
34	ABA0062	INTERNAL MUFFLER	1
35	ABA0087	MUFFLER BODY	1
36	ABA0009	VALVE SEAT	1
37	ABA0007	VALVE	1
38	ABA0014	VALVE SPRING	1
39	ABA0013	INLET BUSHING ASSEMBLY	1
40	ABA0044	O-RING	2
41	ABA0006	SGV RETAINER	1
42	ABA0410	ASSEMBLY FOR 1 in./28 mm HOSE SuperVAC SGV SWIVEL EXHAUST	1
43	ABA0778	1 in./28 mm HOSE SEAL	1
44	ABA0409	ASSEMBLY FOR 3/4 in./19 mm HOSE SuperVAC SWIVEL EXHAUST FITTING	OPT
45	ABA0854	3/4 in./19 mm HOSE SEAL	OPT
46	ABA0935	GENERIC 1 in./28 mm HOSE SEAL TAG W/INSTRUCTION	1
	ABA0855	GENERIC 3/4 in./19 mm HOSE SEAL TAG W/INSTRUCTION	OPT
47	ABC0108	SuperVAC SGV ADAPTER	1
48	ABA0099	ROS SuperVAC CV 1 in./28 mm SWIVEL EXHAUST ASSEMBLY	1
49	ABA0205	ROS SuperVAC CV 3/4 in. SWIVEL EXHAUST ASSEMBLY	OPT
50	ABA0300	ø 3/4 in. VAC HOSE TO ø 3/4 in. x 1 in./28 mm ADAPTER COUPLING AND AIRLINE ASSEMBLY	OPT
	ABA0392	ø 1 in. VAC HOSE TO ø 1 in./28 mm x 1 1/2 in. ADAPTER COUPLING AND AIRLINE ASSEMBLY	OPT
51	ABA0412	ø 1 in. VAC HOSE TO DOUBLE BAG FITTING AND AIRLINE ASSEMBLY	1
	ABA0411	ø 3/4" (19 mm) VAC HOSE TO DOUBLE BAG FITTING AND AIR LINE ASSEMBLY	OPT
52	ABA0048	FLANGED NUT	1
53	ABA0047	WASHER	1
54	ABA0769	SCREW	1
55	ABC0109	VACUUM BAG INSERT	1
56	ABC0110	VACUUM BAG	1

Proper Use of the Tool

This sander is designed for sanding all types of materials i.e. metals, wood, stone, plastics, etc. using abrasive designed for this purpose. Do not use this sander for any other purpose than that specified without consulting the manufacturer or the manufacturer's authorized supplier. Do not use back-up pads that have a working speed less than 12,000 RPM free speed

Work Stations

The tool is intended to be operated as a hand held tool. It is always recommended that the tool be used when standing on a solid floor. It can be in any position but before any such use, the operator must be in a secure position having a firm grip and footing and be aware that the sander can develop a torque reaction. See the section "Operating Instructions".

Putting the Tool into Service

Use a clean lubricated air supply that will give a measured air pressure at the tool of 90 psig (6.2 bar) when the tool is running with the lever fully depressed. It is recommended to use an approved 3/8 in. (10 mm) x 25 ft (8 m) maximum length airline. It is recommended that the tool be connected to the air supply as shown in Figure 1.

Do not connect the tool to the airline system without incorporating an easy to reach and operate air shut off valve. The air supply should be lubricated. It is strongly recommended that an air filter, regulator and lubricator (FRL) be used as shown in Figure 1 as this will supply clean, lubricated air at the correct pressure to the tool. Details of such equipment can be obtained from your supplier. If such equipment is not used then the tool should be manually lubricated by shutting off the air supply to the tool, depressurizing the line by pressing the lever on the tool. Disconnecting the airline and putting 2 to 3 drops of suitable pneumatic motor lubricating oil, preferably incorporating a rust inhibitor into the hose end (inlet) of the machine. Reconnect tool to air supply and run tool slowly for a few seconds to allow air to circulate the oil. If tool is used frequently lubricate on daily basis and if tool starts to slow or lose power. It is recommended that the air pressure at the tool be 90 PSI (6.2 Bar) while the tool is running so the maximum RPM is not exceeded. The tool can be run at lower pressures but should never be run higher than 90 PSI (6.2 Bar). If run at lower pressure the performance of the tool is reduced.

Operating Instructions

- 1) Read all instructions before using this tool. All operators must be fully trained in its use and aware of these safety rules. All service and repair must be carried out by trained personnel.
- 2) Make sure the tool is disconnected from the air supply. Select a suitable abrasive and secure it to the back-up pad. Be careful and center the abrasive on the back-up pad.

- 3) Always wear required safety equipment when using this tool.
- 4) When sanding always place the tool on the work then start the tool. Always remove the tool from the work before stopping. This will prevent gouging of the work due to excess speed of the abrasive.
- 5) Always remove the air supply to the sander before fitting, adjusting or removing the abrasive or back-up pad.
- 6) Always adopt a firm footing and/or position and be aware of torque reaction developed by the sander.
- 7) Use only correct spare parts.
- 8) Always ensure that the material to be sanded is firmly fixed to prevent its movement.
- 9) Check hose and fittings regularly for wear. Do not carry the tool by its hose; always be careful to prevent the tool from being started when carrying the tool with the air supply connected.
- 10) Dust can be highly combustible. Vacuum dust collection bag should be cleaned or replaced daily. Cleaning or replacing of bag also assures optimum performance.
- 11) Do not exceed maximum recommended air pressure. Use safety equipment as recommended.
- 12) The tool is not electrically insulated. Do not use where there is a possibility of coming into contact with live electricity, gas pipes, water pipes, etc. Check the area of operation before operation.
- 13) Take care to avoid entanglement with the moving parts of the tool with clothing, ties, hair, cleaning rags, etc. If entangled, it will cause the body to be pulled towards the work and moving parts of the machine and can be very dangerous.
- 14) Keep hands clear of the spinning pad during use.
- 15) If the tool appears to malfunction, remove from use immediately and arrange for service and repair.
- 16) Do not allow the tool to free speed without taking precautions to protect any persons or objects from the loss of the abrasive or pad.

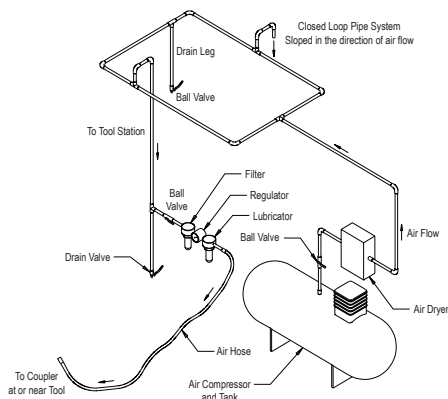


Figure 1

**C/ Hosteleria, 10
14900 Lucena (Cordoba)
Tlf. 900 525 735**

www.abrastar.com
sat@abrastar.com

abrastar.